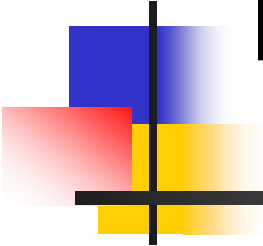


ADAGIO – IERSD/NOA-Greece



Dr. Michael Petrakis, Director of Research,
Institute for Environmental Research and
Sustainable Development, National
Observatory of Athens (IERSD/NOA)

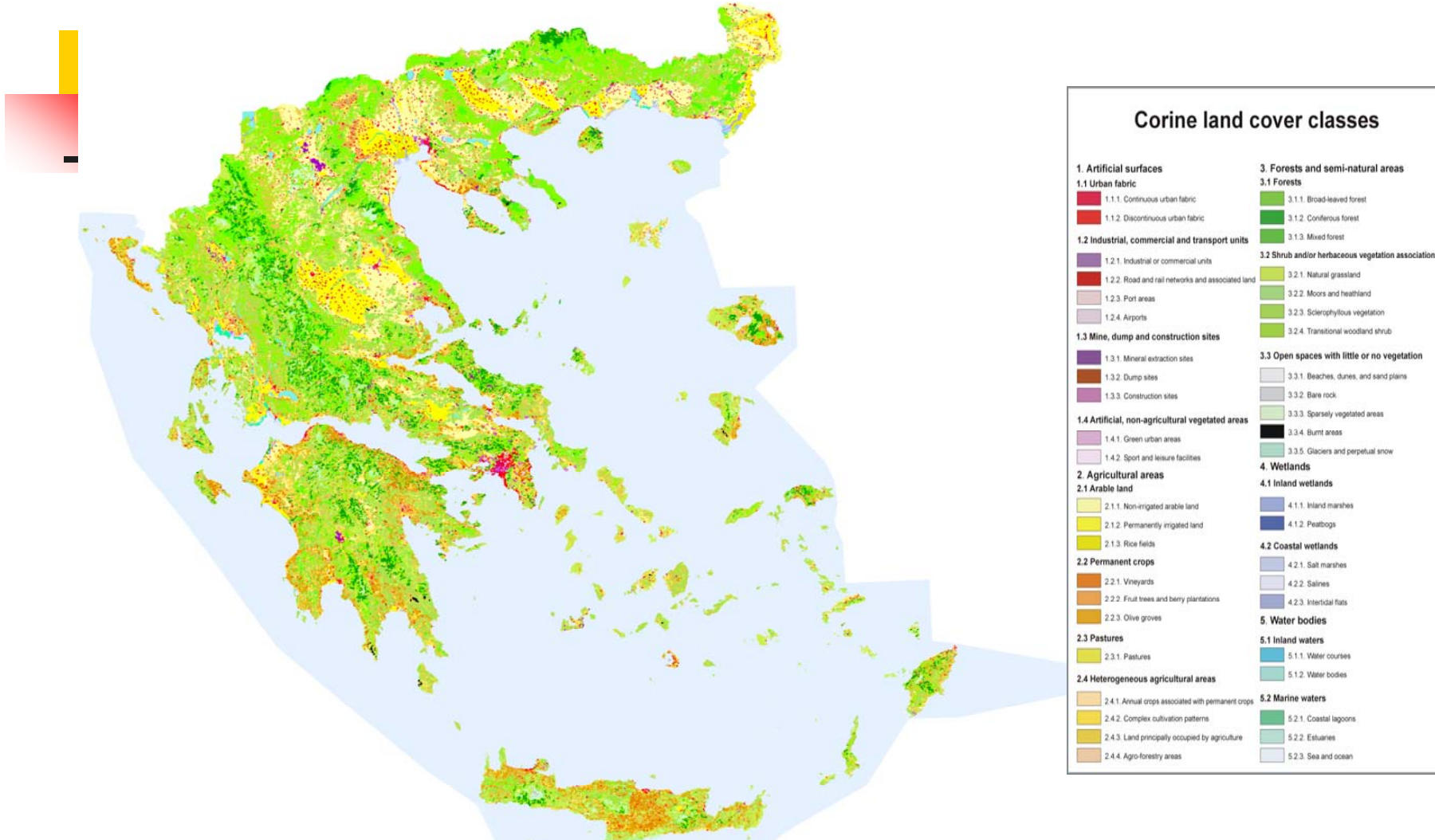
Dimos P. Anastasiou

IERSD: A brief description



- National Observatory of Athens (NOA) is the oldest research institution in Greece; IERSD is a research institute of NOA
- www.meteo.gr (displays weather forecasts in Greek covering 160 Greek cities and 30 points over the Greek seas) and also
www.eurometeo.gr (EU cities)
<http://www.noa.gr/forecast> (BOLAM and MM5 models)

Corine Land Cover



The selection of Pilot Project areas will be aided by the Corine Land Cover Dataset.

Image map as accessed online from the website of the European Environment Agency at <http://www.eea.europa.eu/>



Pilot Study Area(s): Social Activities

- Communicate with individual farmers and farming organizations
- Meetings and outreach through meetings in the country
- Marketing document / material to communicate appropriately with farmers

Pilot Study Area: Activities



- Access meteo, plant and spatial data
- Climatic modelling Review
- Input that data into plant growth models
- Use of the crop growth models
- Utilize AGRIDEMA pilot project for Greece



Pilot Study Area: Activities

- Access vulnerability of the pilot project areas
- Involve farmers as much as possible
- Communicate findings according to ADAGIO framework



Pilot Study Areas: Plant Data

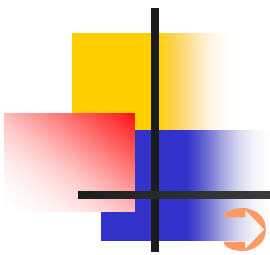
- Plant growth data may not be available and thus model calibration and application
- Field work may be needed for data collection
- Utilization of the AGRIDEMA Pilot Project in Greece

Pilot Project Location and Topologies

Subjective selection of pilot areas:

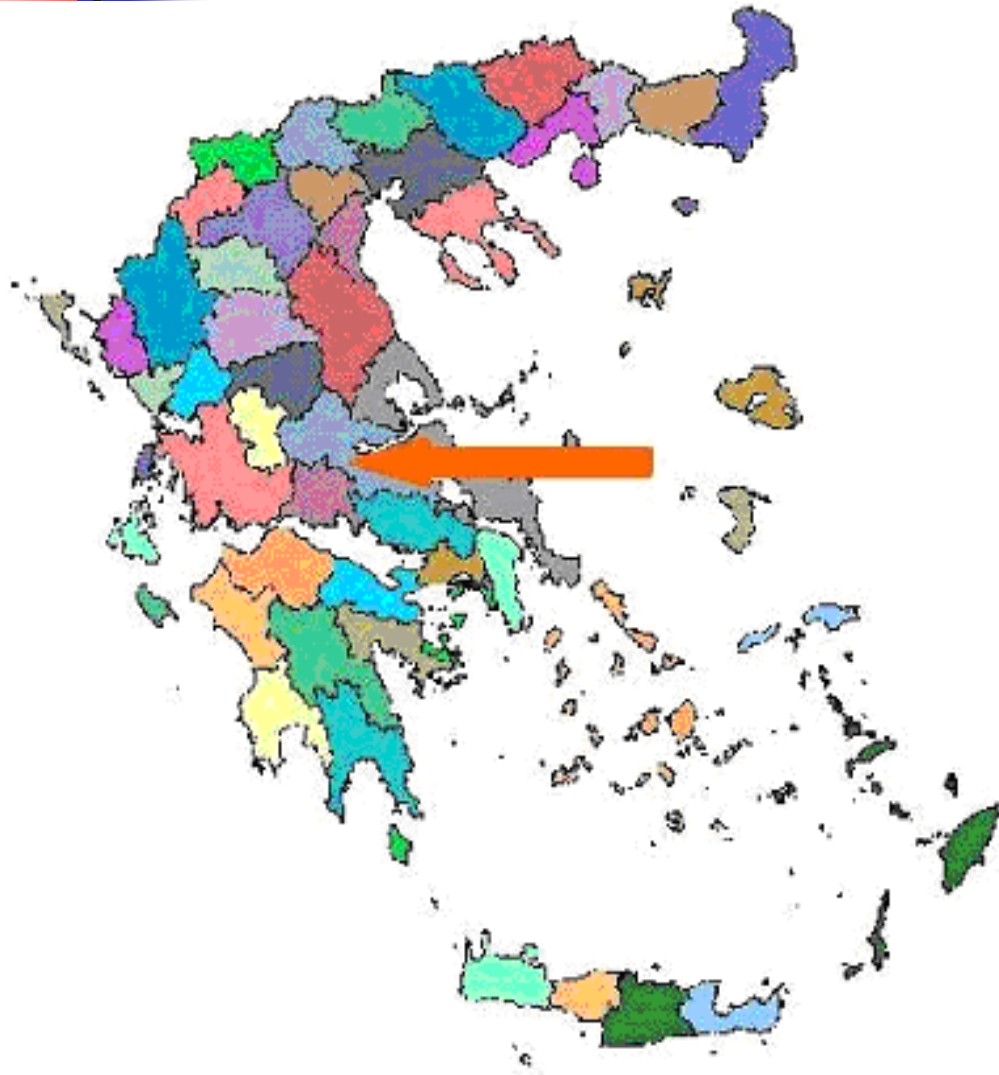
- Two areas in two different agro-climatic areas of the country
- Has traditional agricultural land use and/or irrigated and other agricultural areas
- Examine the agricultural workforce and population trend
- Collect, if desired, a sample of the farmers' observations on climate change, and position all observations on the map

Pilot Project Themes

- 
- Site specific, traditional land uses and their water demand and climate change adaptation potential-Cross comparison with the existing intensive agriculture practices and conditions on their adaptation ability to climate change
 - Case study on tree-crop ecosystems: vulnerability to climate change in relation to intensive, single species agriculture.

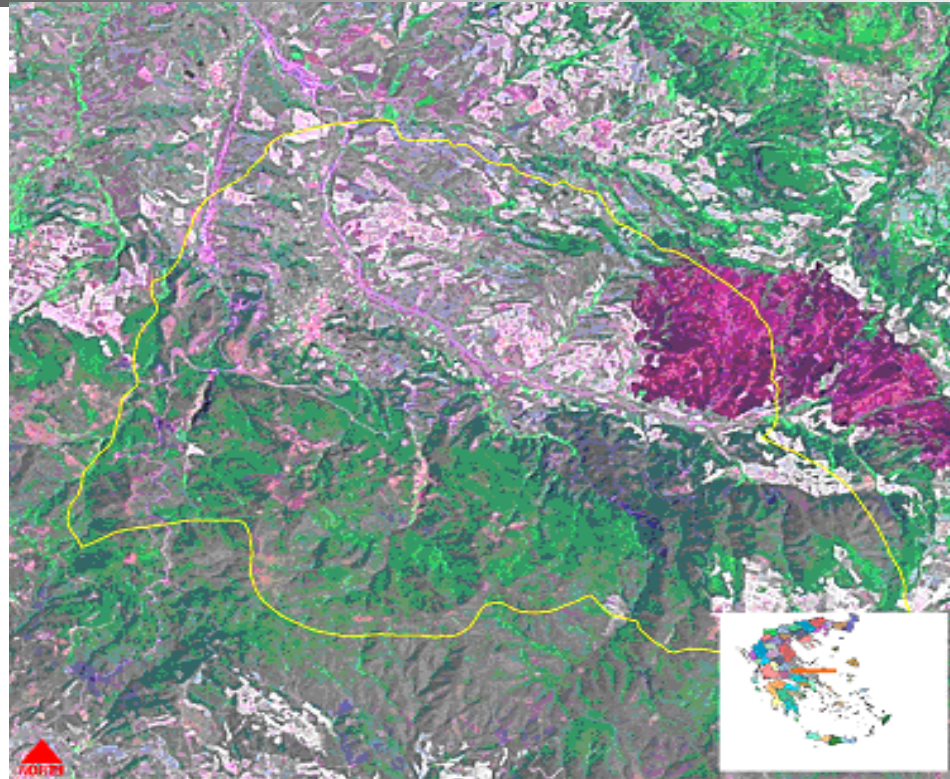
Small Pilot Project Area

Example



- Small municipality at the central Greece with positive total population trend
- classified as LFA (Reg 75/268/ EC)
- Needs irrigation to increase production
- Has significant environmental variability and micro-environments

Pilot Study Area Landsat Panchromatic Photo



Landsat Photo Source: EarthExplorer from U.S. Geological Survey

URL: <http://earthexplorer.usgs.gov/>

Vector Data: Ministry of Environment, Spatial Planning and Public Works, www.minenv.gr

Assessment: What has been done so far?



- ⇒ Short list of potential pilot project areas
- ⇒ Definition of scientific analysis to be conducted within ADAGIO for the pilot project areas and in accordance with the project's partners

Assessment: What has been done so far?



- ⇒ Informal interviews, discussions and contacts with individual farmers and cooperative directors (data has been collected for one possible pilot area)
- ⇒ List of possible institutions to cooperate for information dissemination



ADAGIO – IERSD/NOA-Greece

Thank you,

Dimos P. Anastasiou